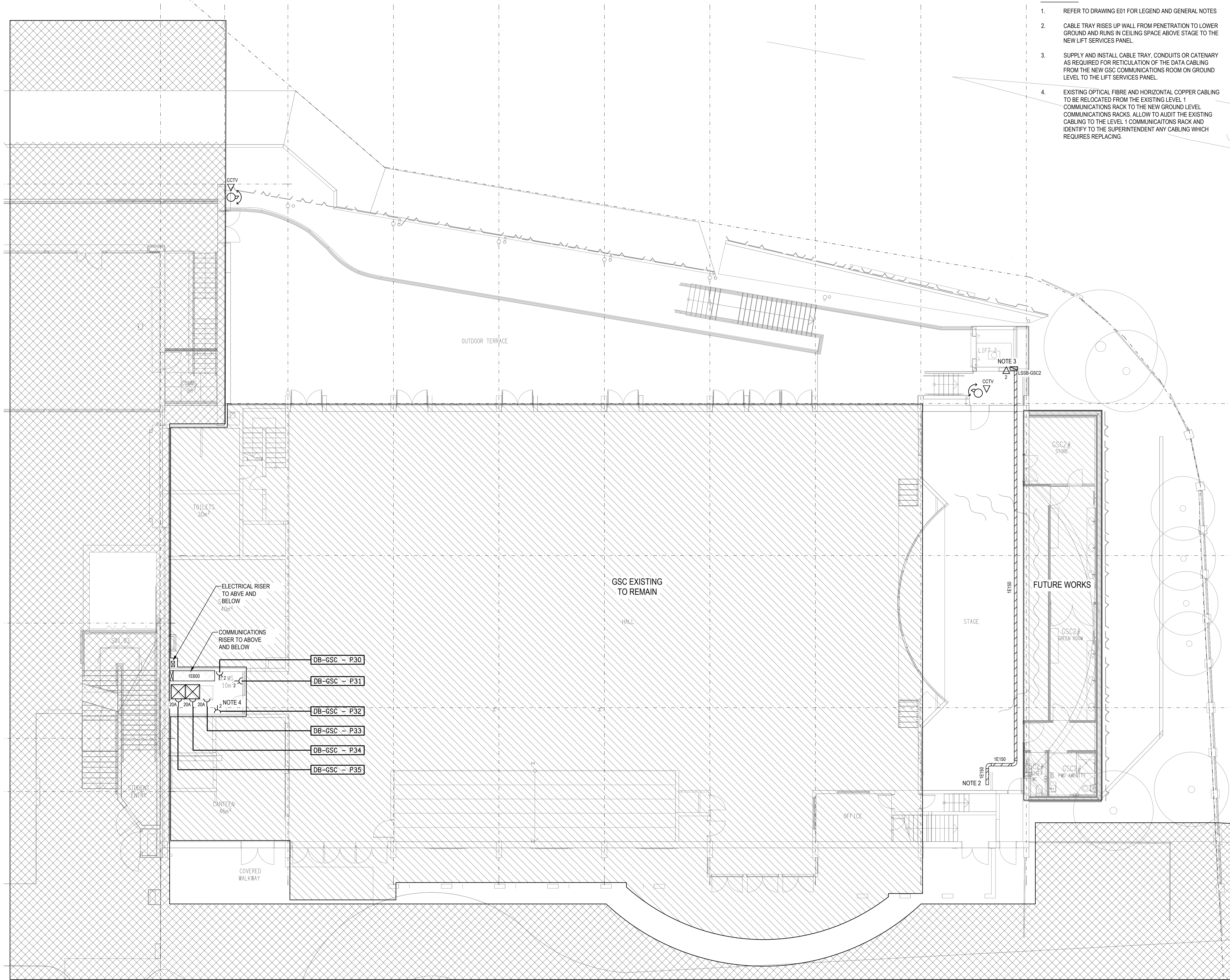


NOTES:

1. REFER TO DRAWING E01 FOR LEGEND AND GENERAL NOTES
2. CABLE TRAY RISES UP WALL FROM PENETRATION TO LOWER GROUND AND RUNS IN CEILING SPACE ABOVE STAGE TO THE NEW LIFT SERVICES PANEL.
3. SUPPLY AND INSTALL CABLE TRAY, CONDUITS OR CATENARY AS REQUIRED FOR RETICULATION OF THE DATA CABLING FROM THE NEW GSC COMMUNICATIONS ROOM ON GROUND LEVEL TO THE LIFT SERVICES PANEL.
4. EXISTING OPTICAL FIBRE AND HORIZONTAL COPPER CABLING TO BE RELOCATED FROM THE EXISTING LEVEL 1 COMMUNICATIONS RACK TO THE NEW GROUND LEVEL COMMUNICATIONS RACKS. ALLOW TO AUDIT THE EXISTING CABLING TO THE LEVEL 1 COMMUNICATIONS RACK AND IDENTIFY TO THE SUPERINTENDENT ANY CABLING WHICH REQUIRES REPLACING.



C	INFORMATION	11/12/2023
REV:	DESCRIPTION:	DATE:

ELECTRICAL DESIGN GROUP
ELECTRICAL BUILDING SERVICES CONSULTANTS

BRISBANE: P.O. Box 15 Sherwood Qld 4075
Phone: (07) 3278 4375
Email: brisbane@edg.net.au
Web: www.edg.net.au

ELECTRICAL DESIGN GROUP BRISBANE / TRADING AS:
PTY LTD ACN 092 710 793 / ELECTRICAL DESIGN GROUP

PROJECT:
**LOURDES HILL COLLEGE
STAGE 1**

SITE ADDRESS:
86 HAWTHORNE ROAD,
HAWTHORNE, QUEENSLAND

SCALE: 1:100 SHEET SIZE: AT A1

DRAWING TITLE:
**ELECTRICAL SERVICES
STAGE 1B GROUND LEVEL
FLOOR PLAN**

PROJECT NO. DRAWING NO. REVISION:
C3134a E22 C